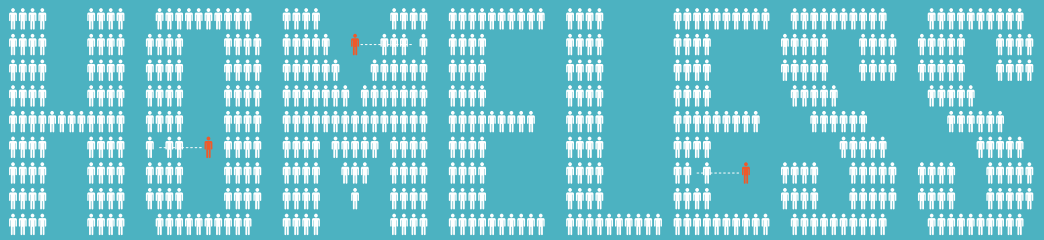


CHIP



COALITION FOR HOMELESSNESS INTERVENTION AND PREVENTION



WHO IS EXPERIENCING HOMELESSNESS IN INDIANAPOLIS

A GLIMPSE AT A SINGLE JANUARY NIGHT IN 2017

POINT IN TIME

1783

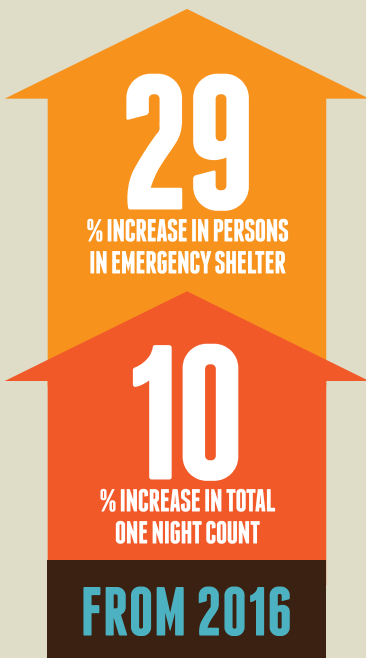
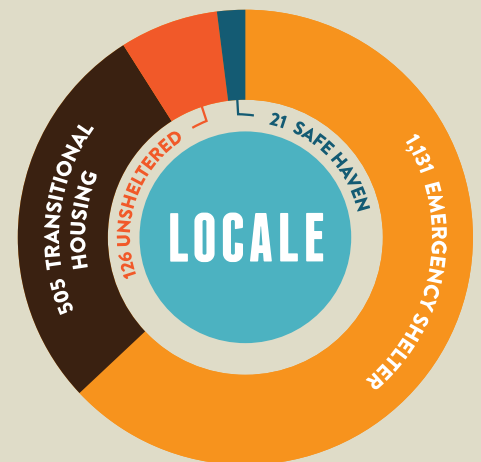
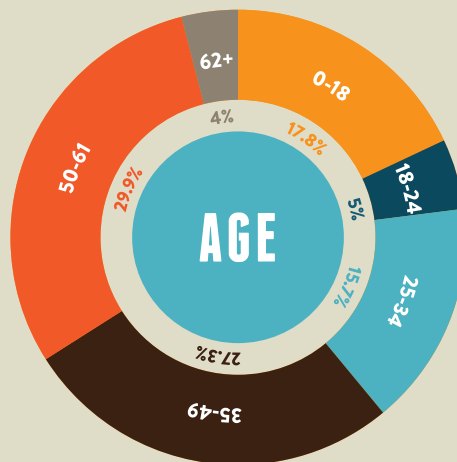
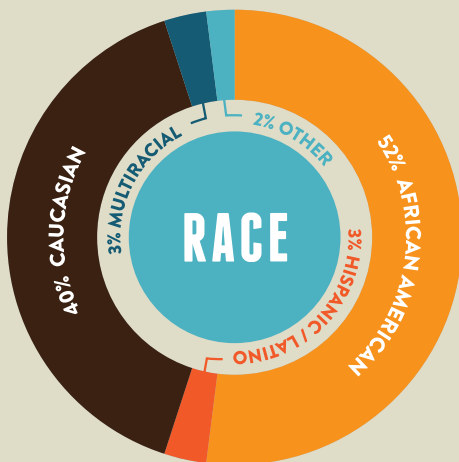
INDIVIDUALS HOMELESS ON JANUARY 25, 2017

12,055 TOTAL ALL YEAR IN 2016

1,176 MALE

601 FEMALE

6 TRANSGENDER



82%

WERE HOMELESS
LESS THAN 1 YEAR



WERE CHRONICALLY
HOMELESS

18%

57% HAVE SOME FORM OF DISABILITY

45% HAVE SERIOUS MENTAL ILLNESS

50% OF WOMEN HAVE SURVIVED ABUSE

29% ARE VETERANS

34% HAVE SUBSTANCE USE DISORDERS

77% HAVE AT LEAST A HIGH SCHOOL DIPLOMA



18 PREGNANT WOMEN

160 FAMILIES (189 ADULTS & 315 CHILDREN)

3,038 CHILDREN WERE LIVING IN
NONPERMANENT HOUSING

76% OF ALL HOMELESS CHILDREN ARE DOUBLED UP
WITH THE MOST COMMON AGE RANGE OF 9-12

WITH 9% OF CHILDREN 9-12 REPORTED UNSHELTERED

29%
DOMESTIC
ABUSE

15%
DRUG
ABUSE

89
YOUTH
18-24

28%
MENTAL
ILLNESS

13%
DEVELOPMENTAL
DISABILITY

WITH INCREASED ODDS FOR ABUSE & SUICIDE



SPEAK OUT

TALK WITH FRIENDS,
FAMILY & COWORKERS
ABOUT HOMELESSNESS
AND ENCOURAGE THEM
TO GET INVOLVED



JOIN

BECOME A MEMBER OF
THE CONTINUUM OF CARE
TO WORK TOWARDS
FINDING SOLUTIONS TO
END HOMELESSNESS



DONATE

SUPPORT CHIP TO HELP
BRING ADDITIONAL
RESOURCES TO
INDIANAPOLIS
HOMELESS



COALITION FOR HOMELESSNESS
INTERVENTION AND PREVENTION

LEARN MORE AT WWW.CHIPINDY.ORG