



2024 Q1 CoC Convening

Indianapolis Continuum of Care  
February 29th, 2024

INDIANAPOLIS  
**COC**  
CONTINUUM OF CARE

**CHIP**  
COALITION FOR HOMELESSNESS  
INTERVENTION & PREVENTION

---

---

---

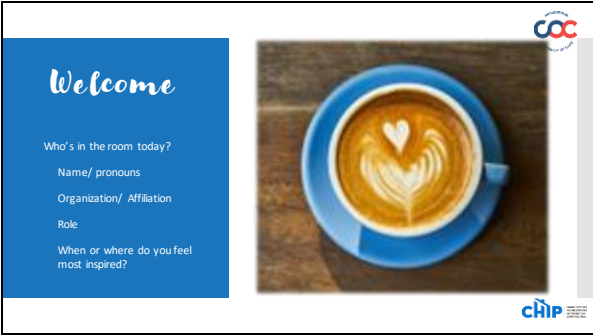
---

---

---

---

---



*Welcome*

Who's in the room today?

Name/ pronouns

Organization/ Affiliation

Role

When or where do you feel most inspired?

**COC**

**CHIP**

---

---

---

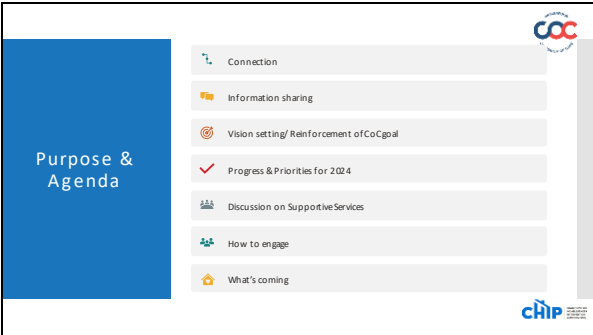
---

---

---

---

---



**Purpose & Agenda**

- Connection
- Information sharing
- Vision setting/ Reinforcement of CoC goal
- Progress & Priorities for 2024
- Discussion on Supportive Services
- How to engage
- What's coming

**COC**

**CHIP**

---

---

---

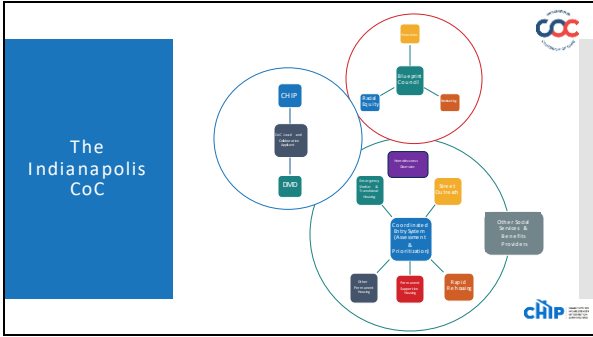
---

---

---

---

---




---

---

---

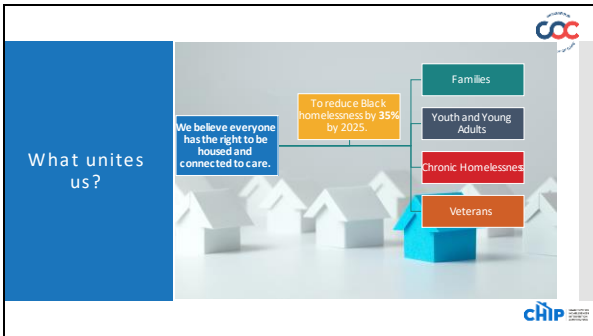
---

---

---

---

---




---

---

---

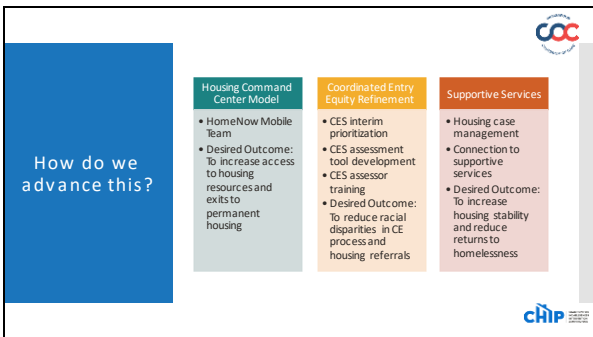
---

---

---

---

---




---

---

---

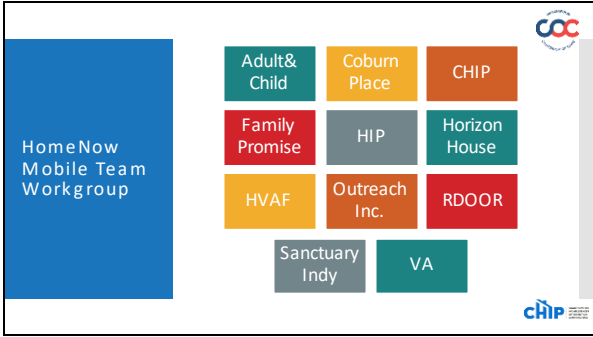
---

---

---

---

---




---

---

---

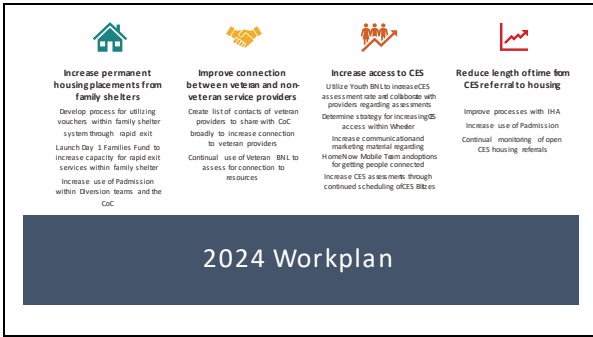
---

---

---

---

---




---

---

---

---

---

---

---

---




---

---

---

---

---

---



---

---

**Priority Population: Families**

**FAMILY WORKGROUP:**

- Launching this afternoon and will be monthly.
  - Next one is March 29, 2024.
- Dedicated space for family shelters to staff and address housing needs for families they are serving (in HMIS or not!)
- Connection to community at large (CES, Flex Funding, Vouchers, Navigation and Documentation Support, Housing Acquisition Team, Center for Working Families Network, etc.)
- Build transparent communication and conflict resolution.
- Focus on permanent housing placements from family shelters


---

---

---

---

---

---

---

---

**Day 1 Families Centralized Diversion Fund**

**What is the FCDF?**




- Flexible funding access to eligible households to support housing stability initiatives.
- \$25,000 a month
- Key Features - Housing Problem Solving & Housing Stability Planning

**Goals of the FCDF:**

- Improve pathways to affordable housing for families.
- Divert or assist with households from housing instability.
- Reduce stress on the overburdened homeless services system.
- Streamline access to funding.

**Who is Eligible?**

- Household with children
- Housing status: Imminent Risk, fleeing DV, literally homeless


---

---

---

---

---

---

---

---




**Day 1 Centralized Diversion Fund**

**How to access the FCDF?**

- HIP Diversion Team
- Core Family Shelter Partner
- Family Shelter Partner Referral

**Typical Expenses:**

- Vital document fees
- Application Fees
- Security Deposit
- First month rent
- Utility arrears
- Small amount of old eviction arrears


---

---

---

---

---

---

---


---

**Family Rapid Exit-Homeless Preference Vouchers**

As of late January, five (5) Section 8 Homeless Preference Vouchers per month will be dedicated to family shelters

Salvation Army, Wheeler, Dayspring, Holy Family, and Family Promise can each refer one household/month through the coordinated entry system

Equity Target – 65-70% referrals for Black households (3-4/month).




---

---

---

---

---

---

---


---

**Coordinated Entry System (CES) Equity Overhaul**

CES workgroup has been working on the following:

- Centering racial equity in the following ways
  - Creating a shared understanding amongst workgroup members in our internal group dynamic
  - Working towards imbedding racial equity in the CES process, which is difficult because we've never seen racial equity play out on a systemwide level, and we've gotten used to working within inequitable confines
- Thinking through the gaps of our own understandings of the CES process and using collectivism to create a new and better tool.
- Sifting through the mechanics of developing a new and localized tool. Establishing the intake process, order of questions asked, and defining the logic behind how questions are/aren't weighted to make the new CES process user friendly for assessors, but also reducing the risk of harm to clients when the tool is used.

[Wahida@cicf.org](mailto:Wahida@cicf.org) 510-689-7667




---

---

---

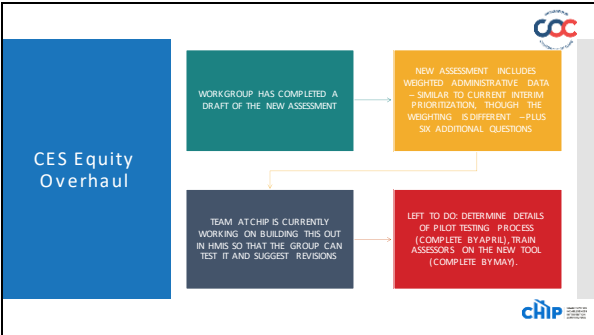
---

---

---

---

---




---

---

---

---

---

---

---

---




**Permanent Housing**

**Placements by Housing Type For Referrals**

(9/17/2023 – 2/7/2024)

Housing Type	Total # of Housing Placements	Indigenous/ Alaska Native	Black/ African American	Multi-Racial	Native Hawaiian or Pacific Islander	White	Unknown
Rapid Rehousing (RRH)	126	1%	45%	6%	-	49%	-
Permanent Supportive Housing (PSH)	10	-	46%	10%	2%	40%	2%
Other Permanent Housing (OPH)	15	-	73%	7%	-	20%	-




---

---

---

---

---

---

---

---

---

---

**Coming up in next quarter - HOUSING!**

- Bridge Housing (St. George)
- St. Lucas lofts
- Compass on Washington
- Providence Place
- 2024 Institute Teams




---

---

---

---

---

---

---


---

---

---

**How/where/ who to engage?**

- Connect with your representatives on the Blueprint Council**  
 Direct Service Providers: Anthony Dumas, William Bumphus, Lived Expert's Reps: Imran Sanikola, Stephen Bickala
- Engage in a Workgroup**  
 Family Workgroup – Bryan Ball, HomeNow Indy Mobile Team – Danielle Bagg, Wieman
- Upcoming Work**  
 Case Management - In State, Case Management - Roundtable
- Participate in HMIS to ensure high quality data**




---

---

---

---

---

---

---

---

---

---



---

---

---

---

---

---

---

---