



PHASE 1: DIRECT STREET TO HOUSING RESPONSE

A citywide approach to addressing street and chronic homelessness in Indianapolis

A CITYWIDE INITIATIVE

Streets to Home Indy is grounded in the belief that everyone has the right to be housed and connected to care.

Chronic and unsheltered homelessness has been increasing in Indianapolis. Our community is ready to do something different to change the equation. Led by CHIP, we've launched Streets to Home Indy, a public-private partnership that aims to end chronic and unsheltered homelessness in Indianapolis by 2028.

The first step is getting people off our streets through housing and permanently closing encampments. In the next 12 months, we're going to house 300-350 individuals living on Indianapolis' streets and close encampments across the city. Together, we will make homelessness rare, brief, and non-recurring in Indianapolis.

Indianapolis is positioned to significantly reduce homelessness and serve as a national model.

Through targeted, intensive, and highly coordinated street outreach, housing navigation, unit acquisition, and case management, individuals at an encampment are engaged in a 4-6-week process to move directly from the streets into housing with the services they need to recover and thrive.

FUTURE PHASES

Phase 2 (2026) will expand rehousing capacity, partner with shelters to rapidly house individuals and families.

Phase 3 (2027-2028) will invest and scale system-wide diversion to prevent 2,500 people annually from entering the homeless response system.

WHAT WE'VE DONE SO FAR



95

Unsheltered residents housed through program



3

Encampment sites closed



29

Days on average to house individuals

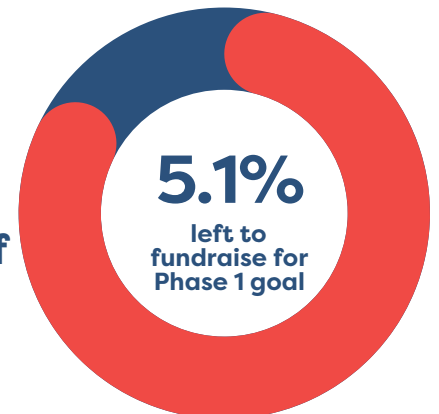


Staying housed with ongoing support services

FUNDING

Powered by \$8.1 million in local, unrestricted funding from our community, Streets to Home Indy Phase 1 is seeking funds for the last \$416,077 to support moving our neighbors off the streets and into stability.

We've raised more than \$7.6 million from the generosity of our community!



OUR MODEL: HOW IT WORKS



1 **OUTREACH + ENGAGEMENT**

Outreach teams engage with residents in encampments to understand the full scope of their needs and to build rapport.

2 **LANDLORD ENGAGEMENT**

3 **RENTAL ASSISTANCE**

Simultaneously, landlord engagement teams are working to secure housing and rental assistance for all encampment residents.

4 **FURNITURE + MOVE IN KITS**



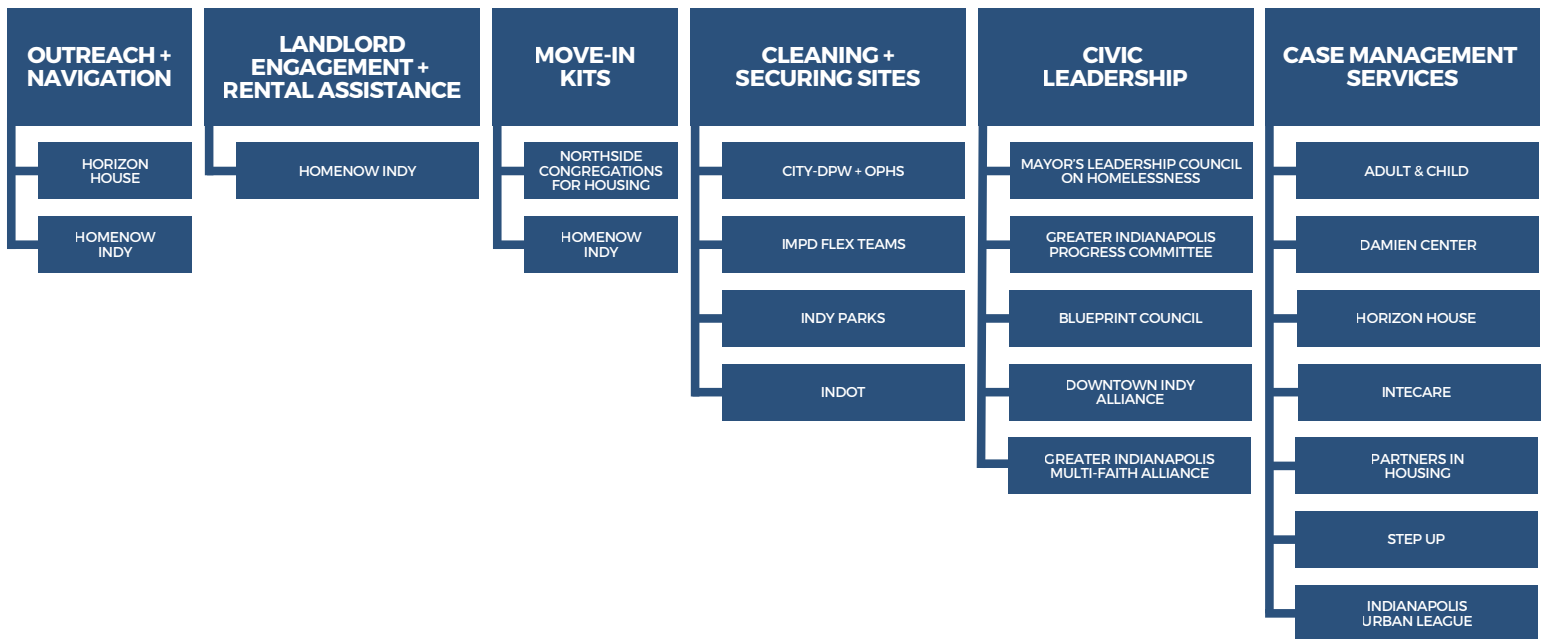
Partner agencies furnish apartments and provide residents with move-in essentials.

5 **CASE MANAGEMENT SUPPORT**

6 **CLEANING + SECURING ENCAMPMENT SITE**

Once all neighbors are housed, they receive 12 months of rental subsidy and stabilization services to help maintain housing. Encampment sites are cleaned, secured, and monitored to mitigate repopulation.

PROGRAM PARTNERS



PROGRAM SUPPORTERS



VISIT TO CHIPINDY.ORG/STREETSTOHOMEINDY TO READ THE LATEST UPDATES AND PROGRESS ON STREETS TO HOME INDY